

Why Are Tyres Important?



Tyre Pressure

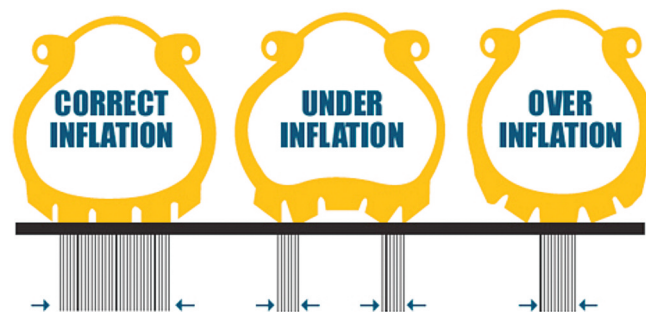
When a tyre is under-inflated, heat builds up inside the tyre, which may eventually lead to a blowout. Tyre failure may cause the driver to lose control of the vehicle, which is particularly dangerous on motorway carriageways.

In the event of a tyre failure, super-single tyres can present the driver with a particular challenge in terms of maintaining control of the vehicle. Other motorists can be put at risk by any tyre debris left on motorway carriageways/roads. Fitting a replacement tyre on a motorway hard shoulder is a highly dangerous activity.

Correct tyre maintenance can greatly reduce these risks and provide a safer working environment for drivers and fitters.

We provide tyre fitting, tyre repairs or even tyre re-grooving to prolong tyre life. Rotating tyres between axles is another method which prolongs tyre life, the down side of rotating full sets is the large cost when the tyres wear out together.

Contact us at ATH on 028 9083 2641 for all your tyre requirements.



FOR SALE

MOFFET MOUNTY

SCISSOR LIFT

Bailies

AUTO REFINISHERS

ACCIDENT REPAIR GARAGE

RELOCATION OFFER

FREE Car Valet with Every Service
(Just mention Ashcroft Trailer Hire)

Car Servicing from £59

Unit 9, Ormonde Avenue,
Ballyhenry Road,
Newtownabbey, BT36 5AT
Tel: 028 9084 8555
Mobile: Lisa 07766 310484

Target The Right Audience With Ashcroft Trailer Hire

We are selling advertising space in our newsletter

Each month we reach 900 local individuals who work in the transport industry. For more information about advertising with us, please email us at cheryl@ashcrofttrailer.co.uk



Ashcroft Trailer Hire



ARTICULATED TRAILER HIRE | SALES | REPAIRS

Ashcroft Trailer Hire Ltd Makes The Headlines

Commuters travelling to Belfast faced traffic disruption as a burnt out lorry was removed from the M1 motorway on Thursday 7th February.

The vehicle caught fire as it travelled along the M1 between Lurgan and Moira just after 6.30pm on Wednesday.

The Northern Ireland Fire and Rescue Service said the driver had a "lucky escape" as he managed to pull over to the hard shoulder at the main Lurgan turn-off before flames engulfed the double-height articulated lorry travelling towards Belfast.

It is understood the driver only became aware of the blaze when it was well-established.

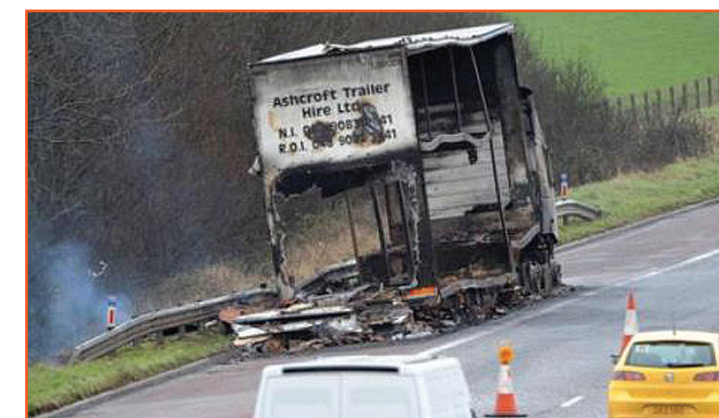
Firefighters say an overheated braking unit caused the blaze which then spread to the trailer.

The lorry was carrying flat pack furniture, as well as several hundred gallons of fuel. Its suspension units collapsed.

Motorists sat in three to four mile tailbacks, when the eastbound carriageway between junctions 9 and 10 was reduced to one lane from 5.30am to 9.30am.

Both lanes were then closed at junction 10 as an operation to move the lorry off the road got underway. The Roads Service said the lanes were also closed to allow debris to be cleared from the carriageway. The recovery operation took several hours.

Three fire appliances and an aerial unit attended the scene.



Flexible Hire Trailers

Worrying Times?

The UK economy remains in troubled times, many decision makers in haulage companies are unsure whether to invest in new equipment.

It's a daunting prospect committing to new equipment or long-term contracts when the future is so uncertain. This is why many operators choose to hire their trailers on short term deals from us.

Why not consider taking equipment on a weekly basis, instead of trying to worry about three, or five years ahead?

Do you really know what your operation will be like that far into the future?

We have a wide variety of trailers available for hire on flexible hire arrangements.

Contact Neil on the hire desk to find out why you don't have to predict the future anymore.

Fall In Truck Numbers To Europe



In the year to June 2012 there was a 4% drop in the numbers of goods vehicles travelling from Britain to mainland Europe, compare to the same period ending in the second quarter of 2011.

Taking the longer view, the totals for 2012 were 17% down on the number of crossing at the peak of the economic boom in 2007. However the figures were still 47% above 1996 levels.

Powered vehicles were 2% down on the year ending in quarter two of 2012, from the same period ending in June 2011. Unaccompanied trailer numbers were 7% down.

Overall, 90% of powered vehicles disembarked in France, while 54% of unaccompanied trailers disembarked in the Netherlands and 26% in Belgium.

The figures come from the Department for Transport

Irish To Get Fuel Rebate

The Irish government is to provide hauliers with a diesel duty rebate from the July 2013 to make the industry more competitive. It will be "strictly policed so as to ensure that the beneficiaries are fully tax compliant", Dublin says. Diesel duty fraud is a huge problem in Ireland. The amount of the rebate is not announced as yet.

HM Treasury's view on such a scheme in the UK is that it has already done a great deal to hold down diesel duty in difficult economic circumstances and that it is opposed to adding complexity to the tax system.



VOSA Points To Importance Of Walk Around Vehicle Checks

Irish haulage operators passing through the UK have been advised to carry out thorough Walk around Vehicle Checks, before taking to the road.

The advice comes from the Vehicle and Operator Services Agency (VOSA), which says that more than eight out of 10 (85%) of issues spotted during roadside inspections should have been detected by the driver carrying out a proper walk around inspection prior to taking the vehicle out on the road, or by noticing changes in the vehicle handling or behavior whilst in use.

These common issues can result in fixed penalties or, in certain cases, endorsements being issued to the driver, a record of failing on the operator's license and changes to the operators OCRS (Operator Compliance Risk Score). These can result in vehicles being stopped more often for further inspections.

The most important element of carrying out these pre-use inspections is that they reduce accidents and incidents on our roads, they improve vehicle longevity and they save lives, VOSA says.

The drivers' check is the final inspection before a vehicle hits the road. It is an important one. Make sure it is carried out correctly, VOSA notes.



VOSA
Vehicle & Operator Services Agency

NI Motorway Service Station Gets Go Ahead



Plans for the first motorway service stations in Northern Ireland have been given the go-ahead. Environment Minister Alex Attwood has announced planning permission for two new service stations on the M2.

Plans for another two service stations on the M1 are due to be brought before Lisburn Borough Council. Currently, commuters have to leave the motorways at an existing junction to find a nearby service station. The stations will have direct slip road access on and off both motorways.

On the M2, the new service stations will be located opposite each other on either side of the motorway at Browns Road, Ballycraig, about two miles west of the Sandyknowles roundabout. On the M1, the proposed service stations are again to be located opposite each other.

Changes To EU Driving Licence Rules From 19th January 2013

These new driving licence rules will impact motorcyclist, car drivers towing trailers, bus and lorry drivers.

From 19th January 2013 a new directive – the third European Directive on driving licences (EU3D) (2006/126/EU) will come into force. It will introduce a single driving licence model across Europe, and common rules about the design of the licence card itself and the period for which it is valid.

This will change driving licence rules in Northern Ireland.

The Directive will introduce the following changes:

- New style design and format of the driving licence
- Introduction of minimum standards for driving examiner initial qualification and periodic training
- New licensing categories and minimum test vehicle requirements for mopeds and motorcycles
- New rules for car drivers towing trailers
- Increase to minimum age requirements for non professional bus drivers; and
- New validity periods for lorry and bus licence holders

All this will make it easier for countries to accept driving licences issued by other member states and let people living in these countries move more freely around Europe. It will also help ensure that each individual can possess only one licence issued by an EU or EEA state at any one time.



New licences issued on or after 19th January 2013 will have to meet the terms of this Directive. Member states will:

- Issue all new driving licences in the new format – for new learned driver and those who pass a test; and
- Replace all existing valid licences with the new format when customers notify a change, exchange or renew their licence.

For further information on EU3D, visit www.nidirect.gov/EU3D